

Microsoft Office Live Communications Server Technical Training



Creating Packaged Service Offerings for Microsoft Office Live Communications Server

Michael Herman
Founder and CTO
Parallelspace Corporation
mwherman@parallelspace.net



Goal of This Talk

- **How Parallelspace created our GTM strategy around Live Communications Server**
 - Subject Matter Experts (SMEs)
 - Specific Branded Collateral
 - Specific framework, processes, tools and best practices
 - Customer proven

parallelspace

Microsoft Office
Live Communications
Server 2003

Parallelspace Corporation

- **Business Collaboration Solutions**
 - Active collaboration solutions for improving the connections companies have with their employees, suppliers, partners and customers
- **Microsoft Solutions and Consulting Partner**
 - Microsoft SharePoint Products and Technologies
 - Microsoft Live Communication Server
- **Founding Groove Networks Business Partner**
 - Leading developer of collaborative business solutions for Groove Workspace

parallelspace

Microsoft Office
Live Communications
Server 2003

Accelerated Deployment Services

- Accelerated Deployment Service for Live Communications Server
- Parallelspace ACMS
 - Accelerated Content Migration Service for SharePoint Portal Server
 - Accelerated Portal Migration Service for SharePoint Portal Server
- Secure Connected Collaboration Solutions for Microsoft SharePoint and Groove Workspace

parallel
space

Microsoft Office
Live Communications
Server 2003

Why are Clients Going to Hire You?

- Simply need extra “arms & legs”
 - Going hourly rate
- Looking for “knowledge transfer” to their people
 - Going hourly rates
 - Take what you know so that they don’t need you next time
- Subject Matter Expertise!

parallel
space

Microsoft Office
Live Communications
Server 2003

Subject Matter Expert Strategy

- **Knowledge Leadership**
 - *Making software easy to understand; easy to explain to others*
 - Early, deep engagement
 - Case studies and whitepapers that others will publish
- **Solution Leadership**
 - *Advanced collaboration solutions for information sharing*
 - Real experience delivering LCS software solutions
- **Partner Leadership**
 - *Collaboration n. The act of working together, united labor.*
 - Working for Microsoft & Microsoft Partners

parallel
space

Microsoft Office
Live Communications
Server 2003

Communication vs. Collaboration

- **Person-to-Person Communications**
 - 1:1, point-to-point, real-time communications
 - Presence
 - Instant messaging
 - A/V, file transfer, shared whiteboard, application sharing
- **Collaboration**
 - 1:many and many:many interaction between members of a project
 - Document collaboration
 - Action request and tracking
 - Project management
 - Saved from one session to the next

parallel
space

Microsoft Office
Live Communications
Server 2003

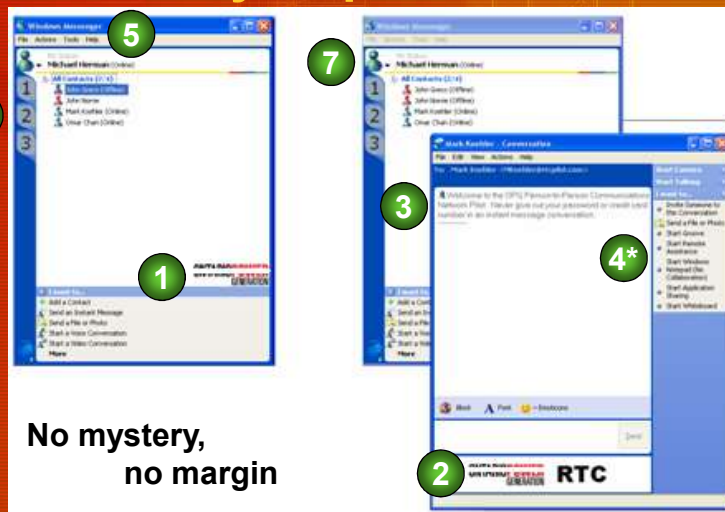
Packaged Services Strategy

- Specific, Existing, Branded Collateral
- Framework
 - Microsoft Solutions Framework based
 - Initiate, Plan, Build, Release, Deploy Operate
- Processes
 - Vision and Scope document
 - Project plan template
 - Network, server, desktop deployment guides
- Tools
 - Graphics, registry files, help templates, “Gloria”
 - Sponsor, operations and end-user training
- Best Practices

parallel
space

Microsoft Office
Live Communications
Server 2003








Know Every Aspect of the Platform





parallel
space

Microsoft Office
Live Communications
Server 2003

Know Every Integration Point

Web and Desktop Collaboration	Person-to-Person Communications	Secure, Cross-Firewall Collaboration
 <ul style="list-style-type: none"> • Microsoft SharePoint Services • Portal Server  <ul style="list-style-type: none"> • Microsoft Office 	 <ul style="list-style-type: none"> • MS Office Live Communications Server  <ul style="list-style-type: none"> • Windows Messenger 	 <ul style="list-style-type: none"> • Microsoft Office Live Meeting  <ul style="list-style-type: none"> • Secure Hosted SharePoint Sites  <ul style="list-style-type: none"> • Groove Workspace

Specific Branded Collateral

- **Service Offering Brochure**
 - Highly customized operational corporate instant messaging solution for 25 people in 5 days for \$7500
 - State what is expected from the customer
 - Hardware, software, people resources
- **Vision and Scope document**
- **Project Plan**
- **User Training Quick Reference**
- **Sponsor “Lunch & Learn” Presentation**
- **Server Operations and Desktop Deployment Guide**




On-Site Delivery

- **Highly customized corporate messaging solution**
 - 25 Users in 5 Days for \$7500
- **Integration with existing IT teams**
 - Project management office
 - Server management
 - Directory and Security management
 - Desktop management
 - Knowledge management office
- **Know thy sponsor; use your sponsor**

parallel
space

Microsoft Office
Live Communications
Server 2003

Domain Experience

- **Person-to-Person Networks**
 - Corporate Instant Messaging
 - Supply Chain / Parts Sourcing
 - Transportation Logistics
 - Desktop Controlled Telephony (DCT)
- **Little or no corporate support except for traditional telephone, email and fax**

parallel
space

Microsoft Office
Live Communications
Server 2003

Package it. Brand it. Sell it. Deliver it. *Flawlessly.*

Michael Herman

Parallelspace Corporation

mwherman@parallelspace.net

Microsoft®
Your potential. Our passion.™

© 2004 Microsoft Corporation. All rights reserved.
This presentation is for informational purposes only. Microsoft makes no warranties, express or implied, in this summary.

PowerPoint Guidelines

- Font, size, and color for text have been formatted for you in the Slide Master
- Use the color palette shown below
- See next slide for additional guidelines

Sample fill
color

Sample fill
color

Sample fill
color

parallel
space

Microsoft Office
**Live Communications
Server 2003**

PowerPoint Template

Subtitle Color

- Example of a slide with a subhead
 - Set the slide title in “title case”
 - Set subheads in “sentence case”
 - Generally set subhead to 36pt or smaller so it will fit on a single line
 - The subhead color is defined for this template but must be selected; On the font color palette, select the color to the right of title color

parallel
space

Microsoft Office
Live Communications
Server 2003